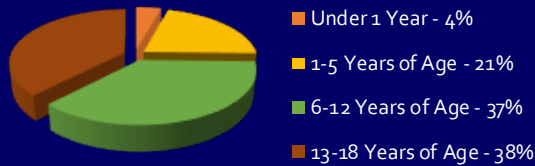


Capacity & Admissions

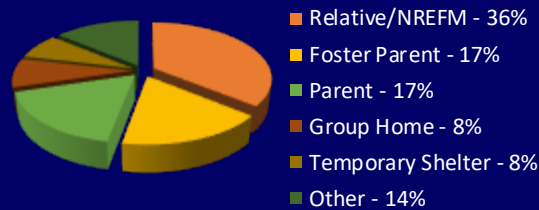
OCFC is licensed to care for up to 216 children. During fiscal year 2017-2018, OCFC provided care for an average of 56 children per day ranging from 29 to 87 children on any given day. On average, OCFC accepts 68 new children a month, and successfully secures alternate placements for 65 children a month.

Yearly Admissions	Avg. Length of Care
810	27 Days

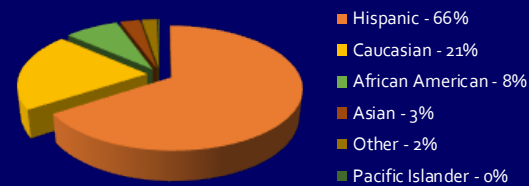
Age Range of Admissions



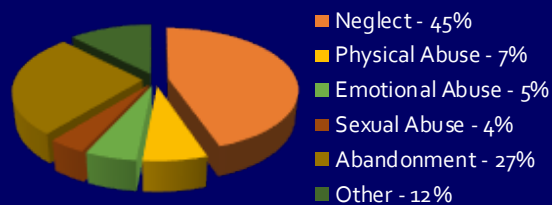
Releases from OCFC



Admission by Ethnicity



Reasons for Referral



Community Partnerships

Volunteers are an essential part of OCFC and the lives of the children we serve. Through the generous support of community partners, we are able to provide collaborative care for the children placed at OCFC.

Approximately 250 volunteers contribute through direct and indirect services.

- Volunteers help provide activities and specialty lessons such as yoga, art, music, dance, fitness and much more.
- A wide variety of community groups and OCFC friends sponsor activities such as field trips to sporting events and cultural arts performances.

Community partners also provide monetary and in-kind donations to support enrichment activities and child specific special requests.

Contacts

To learn more about group activity opportunities or organize a special event for the children, please call (714) 935-7571

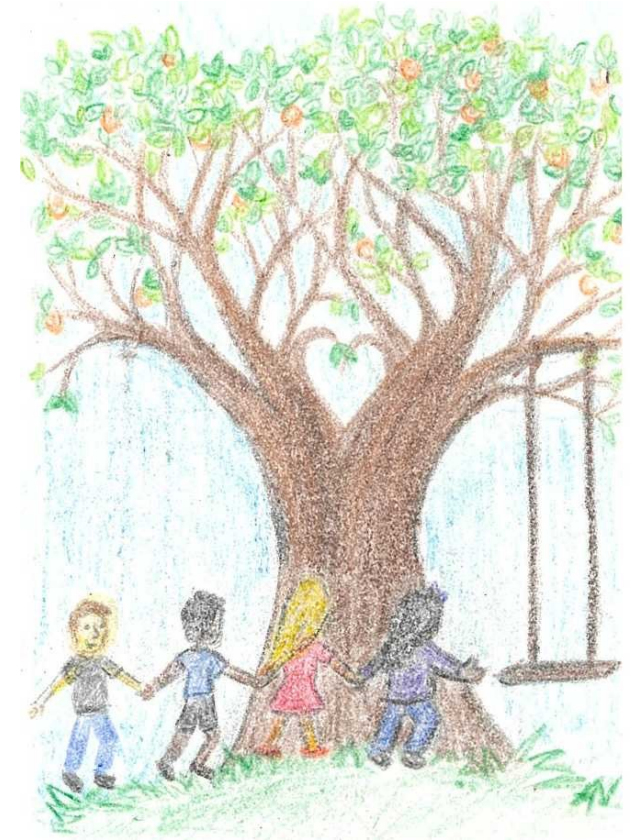
To learn more about donations, especially of new and gently worn children's clothing, call (714)935-7584.



Orangewood Children & Family Center

401 The City Drive—South
 Orange, CA 92868-3303
 phone: 714.935.7584 | fax: 714.935.6485
www.ssa.ocgov.com

County of Orange Social Services Agency



Orangewood Children & Family Center

Serving Families in the Orange County Community
 for Over 30 Years
 2017-2018

About Orangewood...

Orangewood Children and Family Center (OCFC) opened in 1985 and continues to be a full-service center, owned and operated by the County of Orange Social Services Agency for children who are abused, abandoned and/or neglected. With the passage of Assembly Bill 403 and the goals of eliminating long-term group home placements and transitioning foster youth to home based care, OCFC has transitioned to a temporary shelter care facility with stays limited to ten days. OCFC includes the County's 24-hour Shelter Facility; Family Visitation Center, allowing parents to have more natural and frequent interactions with their children; Child Abuse Services Team, a multidisciplinary team conducting forensic investigations; Resource Family Approval program with specialized staff who approve and support placement resource families; and the First Step Assessment Center. OCFC continues to be sustained through the dedicated efforts of a unique public-private partnership. As we have for over 30 years, OCFC will continue serving as a safe refuge for Orange County's abused and neglected children.



FIRST STEP ASSESSMENT CENTER (FSAC)

Children Entering FSAC

1137 (95 per mo.)

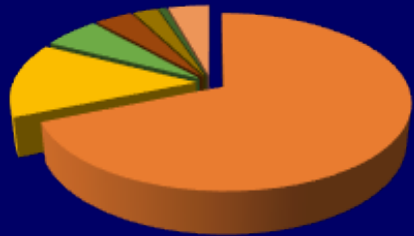
FSAC Diversions from OCFC

31% (356)

FSAC Releases

(Fiscal Year 2017-2018)

- Orangewood - 69%
- Relative/Friend - 14%
- Temp Shelter - 6%
- Foster Parent - 4%
- Parent - 2%
- Group Home - 1%
- Other - 4%



Services at OCFC

OCFC is licensed by the California Department of Social Services as a temporary shelter and provides a warm, nurturing and safe environment for children who are unable to remain with their parents due to abuse, abandonment, and/or neglect. The County of Orange Social Services Agency evaluates and determines if families and family friends are available for placement.

Children are initially cared for at our First Step Assessment Center (FSAC) and may remain there for up to 23 hours. If no approved family or family friend is located, other placement options are considered during this time period. Admission to OCFC is considered only after exhausting all other placement options.

ASSESSMENT & TREATMENT:

A comprehensive team of specialists from Social Services Agency, Health Care Agency, Department of Education and other community partners provide casework services, crisis intervention, diagnostic evaluation, developmental screenings and educational assessments.

Direct care staff utilize a cognitive behavioral model to assist children in developing and strengthening targeted social skills. Adolescents are involved in various types of group counseling such as peer counseling and independent living skills.

MEDICAL:

An on-grounds medical clinic staffed by nurses and a pediatrician from the OC Health Care Agency provides primary care including immunizations, physicals, sick calls, medication management, specialty care coordination, case management and discharge planning with receiving caregivers.

EDUCATION:

OCFC has a year-round on-grounds school for grades K through 12, operated by the Orange County Department of Education; and an on-grounds branch of the Orange County Public Libraries. OCFC direct care staff provides on-grounds classroom experience for preschool age children.